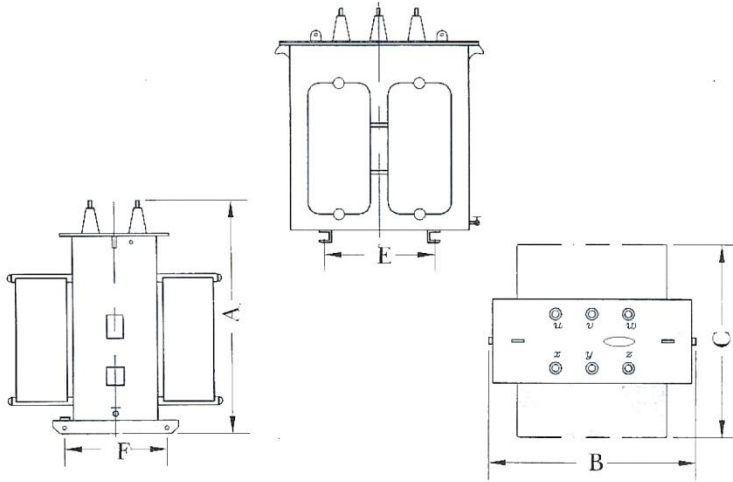


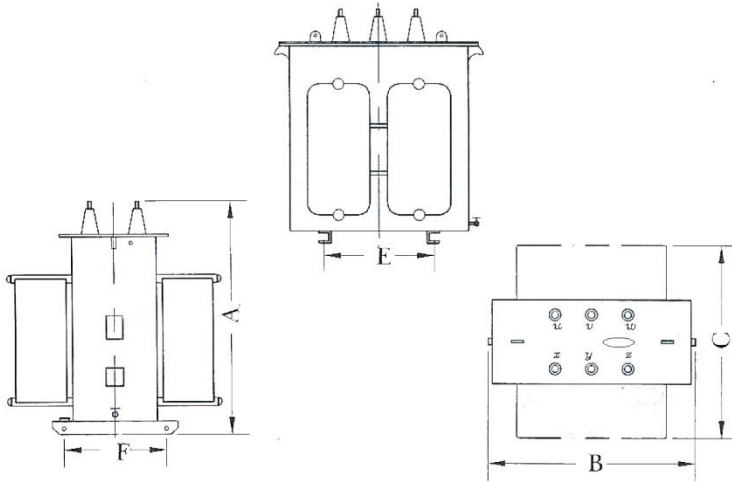
# Oil type series reactors



According to specifications :  
 JEC-2210 、CNS-9094  
 Frequency:60 Hz  
 Phase:3ψ  
 Below 12kVA no radiators  
 Between 18kVA~30kVA is  
 single side radiators  
 Winding temperature rise :65°C  
 Oil temperature rise:55°C

Capacity (kVAR)	System voltage	Dimension (mm)						Oil (L)	Weight (kg)
		A	B	C	D	E	F		
6	3300	800	650	350	580	300	300	50	150
9		830	740	400	610	350	350	65	175
12		930	790	450	710	400	400	78	230
18		980	830	580	760	450	450	90	295
24		1000	920	610	780	500	500	105	365
30		1020	960	610	800	500	500	120	400
36	3450	1020	970	650	800	500	500	130	440
48	3600	1100	1000	650	880	550	550	140	535
54	4160	1100	1020	700	880	550	550	147	560
72		1130	1020	700	910	550	550	150	575
96		1200	1080	720	980	550	550	175	680
108		1270	1100	840	1050	550	550	200	820
144		1380	1250	880	1160	600	600	260	950
180		1420	1250	900	1200	600	600	300	1000
260	1425	1400	930	1200	650	600	350	1300	
300	1500	1440	980	1280	650	600	415	1520	

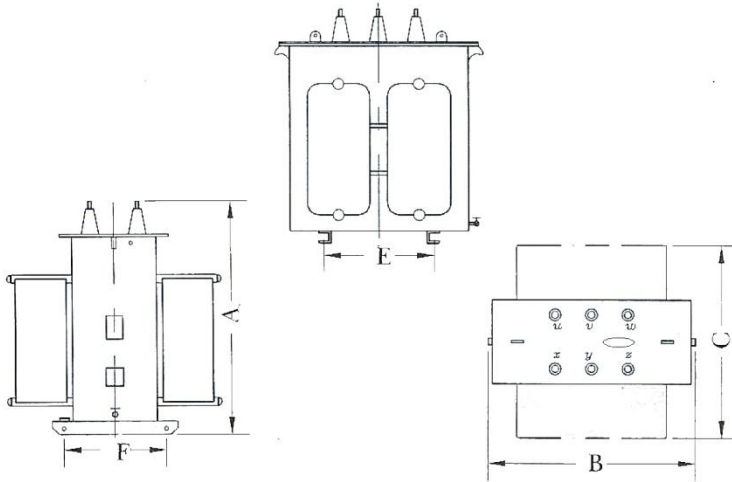
# Oil type series reactors



According to specifications :  
 JEC-2210 、CNS-9094  
 Frequency:60 Hz  
 Phase:3ψ  
 Below 12kVA no radiators  
 Between 18kVA~30kVA is  
 single side radiators  
 Winding temperature rise :65°C  
 Oil temperature rise:55°C

Capacity (kVAR)	System voltage	Dimension (mm)						Oil (L)	Weight (kg)	
		A	B	C	D	E	F			
6	11000	840	650	350	580	300	300	50	150	
9		870	740	400	610	350	350	65	175	
12		970	790	450	710	400	400	78	230	
18		1020	830	580	760	450	450	90	295	
24		1040	920	610	780	500	500	105	365	
30		1060	960	610	800	500	500	120	400	
36		11400	1060	970	650	800	500	500	130	440
48		11950	1140	1000	650	880	550	550	140	535
54		12000	1140	1020	700	880	550	550	147	560
72			1170	1020	700	910	550	550	150	575
96			1240	1080	840	980	550	550	175	680
108			1310	1100	840	1050	550	550	200	820
144			1420	1250	880	1160	600	600	260	950
180			1460	1250	900	1200	600	600	300	1000
260			1465	1400	930	1200	650	600	350	1300
300			1540	1440	980	1280	650	600	415	1520

# Oil type series reactors



According to specifications :  
 JEC-2210 、CNS-9094  
 Frequency:60 Hz  
 Phase:3 $\psi$   
 Below 12kVA no radiators  
 Between 18kVA~30kVA is  
 single side radiators  
 Winding temperature rise :65°C  
 Oil temperature rise:55°C

Capacity (kVAR)	System voltage	Dimension (mm)						Oil (L)	Weight (kg)	
		A	B	C	D	E	F			
6	20000	940	650	350	610	300	300	50	150	
9		970	740	400	640	350	350	65	175	
12		1070	790	450	740	400	400	78	230	
18		1120	830	580	790	450	450	90	295	
24		1140	920	610	810	500	500	105	365	
30		1160	960	610	830	500	500	120	400	
36		22800	1160	970	650	830	500	500	130	440
48		23900	1240	1000	650	910	550	550	140	535
54		24000	1240	1020	700	910	550	550	147	560
72			1270	1020	700	940	550	550	150	575
96			1340	1080	720	1010	550	550	175	680
108			1410	1100	840	1080	550	550	200	820
144			1520	1250	880	1190	600	600	260	950
180			1560	1250	900	1230	600	600	300	1000
260			1565	1400	930	1230	650	600	350	1300
300			1640	1440	980	1310	650	600	415	1520